

## Product Datasheet

# TGFBI Antibody



Catalog No: CY1115      Reactivity: Human, Mouse, Rat

Isotype: Rabbit IgG      Applications: WB, IHC, ICC/IF

[www.abways.com](http://www.abways.com)

### Information

**UniProt ID:** Q15582

**All Names:** Beta ig; Beta ig h3; Beta ig-h3; BGH3\_HUMAN; Big h3; BIGH3; CDB1; CDG2; CDGG1; CSD; CSD1; CSD2; CSD3; EBMD; Kerato epithelin; Kerato-epithelin; LCD1;

**Form:** Liquid

**Storage instructions:** Store at +4°C short term. Store at -20°C long term. Avoid freeze / thaw cycle.

**Storage buffer:** pH 7.4, 150mM NaCl, 0.02% sodium azide and 50% glycerol.

**Purity:** Affinity-chromatography

**Immunogen:** A synthesized peptide

**Molecular Wt.:** 68 kDa

### Application

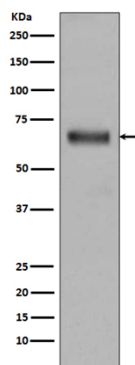
WB: 1:500~1:2000

IHC: 1:50~1:200

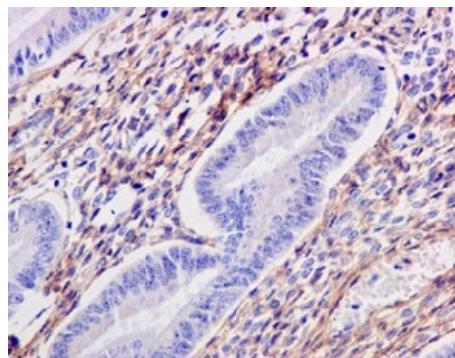
ICC/IF: 1:50~1:200

### Background

TGFBI is a RGD-containing protein that binds to type I, II and IV collagens. The RGD motif is found in many extracellular matrix proteins modulating cell adhesion and serves as a ligand recognition sequence for several integrins. TGFBI plays a role in cell-collagen interactions and may be involved in endochondrial bone formation in cartilage. TGFBI is induced by transforming growth factor-beta and acts to inhibit cell adhesion.



Western blot analysis of TGFBI expression in Human fetal kidney lysate.



Immunohistochemical analysis of paraffin-embedded Human uterus tissue labeling TGFBI.

**For Research Use Only. Not For Use In Diagnostic Procedures.**

[www.abways.com](http://www.abways.com)